

FEEL THE PRIDE.

JOIN THE FAMILY.

Welcome to the Berry College community.



A photograph of a campus scene. In the foreground, a paved walkway leads past a multi-tiered stone waterfall. Several students are walking along the path. In the background, there are lush green trees and a building. The image is partially overlaid by a dark blue graphic on the right side.

YOUR BEST
is yet to come.

**A BERRY EDUCATION
IS A RARE OPPORTUNITY—**

to learn from leading scholars, to be guided by a personal network of mentors and to prepare for a successful future through significant hands-on experience. Here, you'll put your big ideas into action, make lifelong friendships, explore your many interests and deepen your character.

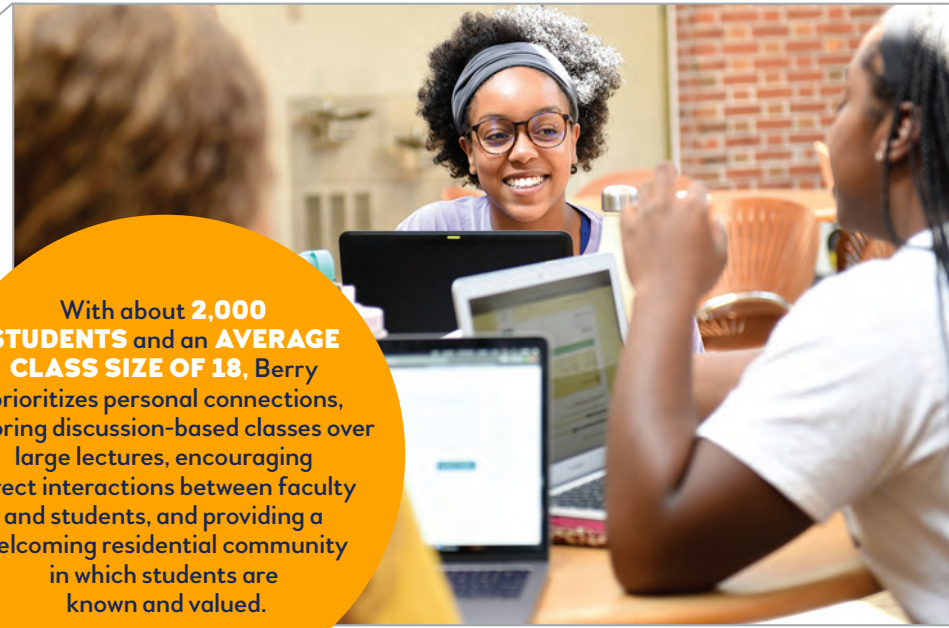
**YOU WILL FIND A SECOND HOME IN OUR
CLOSE-KNIT CAMPUS COMMUNITY—**sharing our
commitment to learning, values and tradition.
The Berry community includes (and depends upon)
the families of our students.

*This booklet will help you
discover the value of a
Berry education—and how we
invest in making it affordable
for every member of the
Berry community.*

CHOOSING A COLLEGE IS ONE OF THE MOST IMPORTANT DECISIONS—AND MOST SIGNIFICANT INVESTMENTS—YOU (AND YOUR FAMILY) WILL EVER MAKE.

Your admission to Berry is likely one of several outstanding offers.

As you and your family contemplate the decision ahead, here are some thoughts on the factors to consider, and how Berry stands on each.



With about **2,000 STUDENTS** and an **AVERAGE CLASS SIZE OF 18**, Berry prioritizes personal connections, favoring discussion-based classes over large lectures, encouraging direct interactions between faculty and students, and providing a welcoming residential community in which students are known and valued.

LOCATION

From midtown Manhattan to the distant countryside, colleges are found in every setting. Colleges in cities can provide additional offerings—but also additional cost. Small campus communities are often more nurturing, supportive and connected.



Situated on a safe and beautiful campus minutes from downtown Rome, Georgia, Berry offers an ideal blend of urban opportunities (including a medical center and businesses that provide students with internships) and the unparalleled resources of our **27,000-ACRE CAMPUS**. Proximity to Atlanta and Chattanooga creates additional internship opportunities.

SIZE

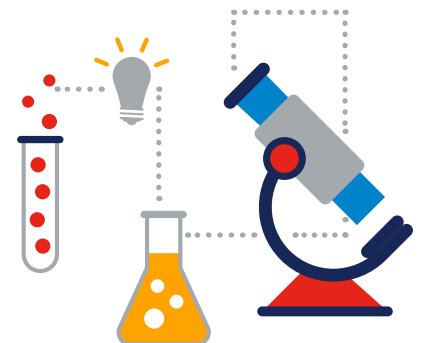
From universities with enrollments that match the populations of small cities to colleges with a few thousand students, the size of your college or university can have a major impact on your academic and personal life.



Berry's programs and resources are available to all students—from **EIGHT SEMESTERS OF GUARANTEED PROFESSIONAL DEVELOPMENT** experience through our signature LifeWorks program to an individualized network of personal and professional mentors to opportunities to spend the summer as paid research assistants with Berry professors.

ACCESS

Larger institutions can sometimes have a greater array of resources than smaller ones, but often access to equipment, facilities, programs and opportunities are restricted to graduate students or to students within a given program or major.



THE VALUE OF A BERRY EDUCATION

*is felt throughout
our graduates' lives.*

THEY LEAVE HERE WITH A STRONG SENSE OF PERSONAL DIRECTION, launching a career that springs from their interests and understanding why their chosen path matters.

THEY ARE CREATIVE AND PRACTICAL PROBLEM SOLVERS who can analyze and understand complex issues. They have an unshakable work ethic and a solid sense of values.

THEY BRING GOOD JUDGMENT AND SOLID PEOPLE SKILLS to everything they do, having lived and learned in a community of curiosity, warmth and respect.

THEY TAKE CONFIDENT OWNERSHIP OF THEIR FUTURES. Having been carefully guided and repeatedly tested, they are well prepared.

AS A RESULT, they do well for themselves, landing great jobs and thriving in graduate and professional schools. They rise quickly throughout their careers and often emerge as leaders.

98%
of 2018–2019
graduates report that
a Berry education led
to a job or acceptance
into graduate or
professional school.

80%
completed a significant
research or internship
experience.

39%
completed a significant
scholarly project with a
faculty member.

44%
studied or traveled
abroad.

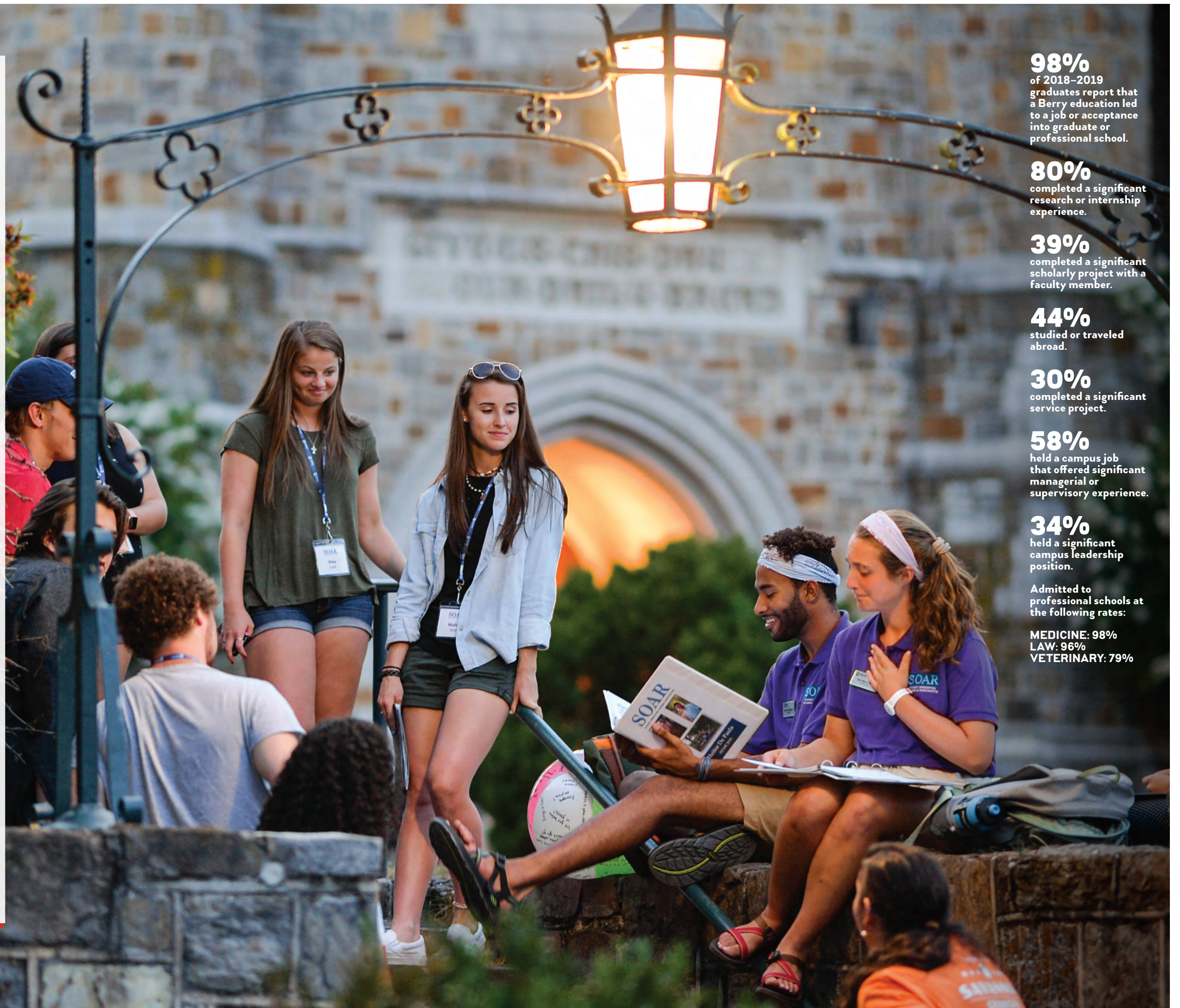
30%
completed a significant
service project.

58%
held a campus job
that offered significant
managerial or
supervisory experience.

34%
held a significant
campus leadership
position.

Admitted to
professional schools at
the following rates:

MEDICINE: 98%
LAW: 96%
VETERINARY: 79%



MEET YOUR FUTURE CLASSMATES, MENTORS AND LIFELONG FRIENDS.

Join the class of 2024 Facebook group to ask questions, connect with your roommate and meet others who share your values and interests.

START *(the best part of)* **COLLEGE TODAY:**



**FACEBOOK.COM/GROUPS/
BERRY2024/**

PARENTS ARE AN INDISPENSABLE PART OF THE BERRY FAMILY.

We've assembled a collection of resources to guide your family's transition to Berry, introduce you to our cherished traditions and keep you up to date on the latest happenings.

JOIN THE BERRY PARENTS' COMMUNITY:



BERRY.EDU/PARENTS

FINANCIAL AID

Payments and Options

THESE TWO PAGES FEATURE:

- ZERO** photos of the 2,100 or so deer that live on our gorgeous 27,000-acre campus
- NOT EVEN ONE** fact or figure about the 1,000+ professional development opportunities available at Berry
- GREAT HEAPS OF** extremely important information that might well change your life

NOW THAT WE HAVE YOUR ATTENTION, KNOW THIS:

We're here to do whatever we can to ease your transition to Berry, including assisting as you make a plan for affording your education.

WE REPEAT: You're not alone in figuring this out. We're here to help at any time.

BUT HERE'S WHAT YOU NEED TO DO:

STEP 1

LOG IN TO THE MYBERRY PORTAL (IF YOU HAVEN'T DONE SO ALREADY) at MYPORTAL.BERRY.EDU. The MyBerry Portal contains important information and links to your updated financial aid offer, transcript evaluations, enrollment forms and payment options for your deposit or tuition account. Please let us know if you can't find your login credentials.

STEP 2

REVIEW YOUR FINANCIAL AID OFFER LETTER. We've included a current copy of your aid offer in this folder, and you can access your other information on the MyBerry Portal (under the Scholarships and Aid tab). It is also important to check your MyBerry Portal to see if there's anything missing. If you have any difficulty, feel free to call us at 800.237.7942.

STEP 3

DETERMINE WHETHER YOU NEED LOANS TO HELP FINANCE YOUR EDUCATION. Loans may sound scary, and honestly, some are. But many are not! You'll have a variety of options from which to choose as you and your family determine what works best for your specific financial circumstances.

Our website berry.edu/admission/scholarships-and-aid/loans provides additional details about each of the options listed below. If you would like additional guidance, we'd be happy to walk you through the various possibilities and share our professional opinions regarding the appropriate amount of debt for your undergraduate education.

A few options to consider:

Federal Direct Student Loans
(2019–2020 fixed interest rate is 4.53%)

If you are considering taking out loans to finance your college education, we recommend that you pursue federal student loan options first. First-year students are eligible for up to \$5,500 in Federal Direct Student Loans per year; sophomores up to \$6,500; and juniors and seniors up to \$7,500. You can accept (or decline) these loans through the MyBerry Portal, and we can walk you through those steps if you need help.

State Loan Options

The Student Access Loan (SAL) (2019–2020 fixed interest rate is 1%) is available to Georgia residents who are eligible for additional need-based financing options after accepting Federal Direct Student Loans. This application process is run through GAFutures.org (affiliated with the Georgia Student Finance Commission) and is available on a first-come, first-served basis. We can help you determine whether you should explore this option, but we encourage you to first visit GAFutures.org to learn more.

Alternative Loan Options and Tips

Whether or not you qualify for need-based financial aid, you may choose to secure a loan to help finance your college education. If you filed the FAFSA, one additional financing option for parents is the Federal Direct Parent Loan (aka the PLUS loan). However, you and your parents may also choose to take on private or alternative loans. When comparing loans, make sure to consider the amount you need, interest rates, repayment times and options. For more guidance on private or alternative loans, visit the "private lenders" link (near bottom of page) on berry.edu/admission/scholarships-and-aid/loans.

STEP 4

PAY YOUR DEPOSIT.

Once you've determined that Berry is where you want to be and have developed a financial plan that works for you, submit your \$250 deposit through the MyBerry Portal. This will guarantee your spot in our community. After you pay your deposit, you'll be able to access additional forms and information regarding orientation and next steps through the MyBerry Portal. We've included a helpful timeline in this packet to keep you on track toward becoming a Berry Viking!

STEP 5

REVIEW YOUR PAYMENT OPTIONS.

There are several ways you can pay your balance to Berry.

- 1 You can pay your balance in full before each semester (July 10 & December 10).
- 2 You can make four payments each semester for a fee of \$55 each semester.
- 3 You can make five payments each semester for a fee of \$55 each semester.

To pay your bill or set up a payment plan, you should visit the Student Account Center on berry.afford.com. We recommend that you provide access to the Student Account Center to anyone who is helping you pay for college—so they can review your account and make payments to it. You can use the Pay My Bill link to either pay your balance in full for each semester or to set up a payment plan using a checking or savings account transfer or a credit card. If you use a credit card, there will be an additional service fee. If you would like help setting this up and understanding what you are responsible for paying now and in the future, don't hesitate to give us a call.

There is a great deal of information packed into these few pages—and even more detailed information available to you on the MyBerry Portal. It's okay if you need to read it more than once—and it's perfectly fine to call us to talk through your options. We know this is a big decision and want you to feel confident about your choice. Let us know how we can help!



READY TO JOIN THE BERRY FAMILY?

Smile, take a selfie and tag

**#BERRY24
IF YOU'RE
#BERRYBOUND
NEXT YEAR!**

HANG ME ON THE FRIDGE!

IMPORTANT DATES COMING SOON

MARCH

Get final results from Berry scholarship programs.

Review your updated financial aid award and share any final information needed.

March 2: Enrollment forms and ALEKS math assessment available on the MyBerry Portal.

APRIL

Register for **SOAR** through MyBerry after you pay your deposit. Registration opens **April 1**.

April 18: Experience Berry's campus in a whole different light at our Berry Bound event for accepted students!

MAY

May 1: Deposit deadline. Send your final high school and/or college transcripts to Berry's Office of Admission.

May 8: Deadline to submit your class preference, housing application and student work placement forms and to complete the ALEKS math assessment through the MyBerry Portal.

JUNE

Get your student bill for fall semester. Review your payment options with your parents/guardians.

Attend a June SOAR session.

JULY

Choose your payment plan and submit your first payment by the **July 10** deadline.

ADDITIONAL INFO AND RESOURCES

Schedule your visit to Berry: BERRY.EDU/VISIT
Free Application for Federal Student Aid (FAFSA): FAFSA.GOV
Your online home for student info: MYPORTAL.BERRY.EDU

A GLIMPSE AT YOUR FIRST YEAR AT BERRY

AUGUST

19: Move into your residence hall room and attend Viking Venture before classes begin.

24: Fall classes begin!

29: Put your heart and your hands to work in the community during First-Year Service Day!

OCTOBER

9–10: Mountain Day Weekend—Berry's annual homecoming celebration for students, parents, alumni and friends, honoring our founder's birthday.

17–20: Fall Break

NOVEMBER

25–27: Thanksgiving Break

DECEMBER

7–11: Finals Week—you're in the home stretch!

10: Payment deadline for spring semester.

12: Your first semester at Berry is complete!

JANUARY

11: Spring classes begin

MARCH

8–12: Spring Break

APRIL–MAY

29–5: Finals Week

6: End of Spring semester—one year in the books!

BERRY.EDU/ACADEMICS/ACADEMIC-CALENDAR

TEAR HERE

**WHATEVER
YOUR DREAMS OR
ASPIRATIONS,**

whoever you are or hope
to become, whatever you
study and explore as you
prepare to build a life,
*we will make certain that you learn it well—
so that you can keep it always.*



